



# **BIKELT**

---

Designed for soft bone and post-extraction surgeries

## IMPLANT GEOMETRY

The **BIKELT** implant shares its prosthetic connection and material with the **IKELT** implant but it is specially designed for soft bone and post-extraction restorations.

Its double-pitch thread provides it with great primary stability in low-density bones. Available in two diameters that share the same prosthetic platform.



## SURGICAL KIT

The peculiar morphology of the **BIKELT** implant requires a particular drilling system. The surgical kit consists of a cylindrical drill common to all references and a specific drill for each reference that replicates its geometry.



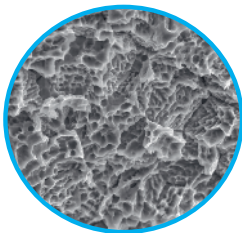
**CLINICAL CASES  
CATALOGUE**

[Download here](#)

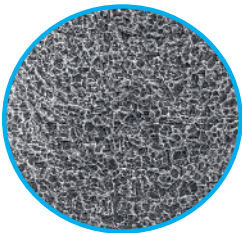


# IMPLANT SURFACE

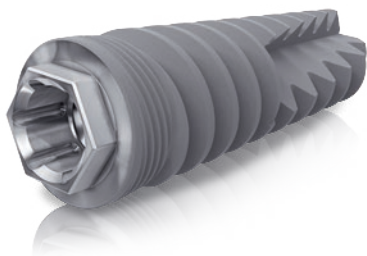
The **BIKELT** implant has a moderately rough surface whose structure is optimal to facilitate the osteoconduction process. Such surface is obtained by means of an acid etching process.



Suface  
micro textured



Suface  
macro textured



## SIZES AVAILABLE

Ø 4mm.		Ø 5mm.	
		L6	BKELT5/46
		L7	BKELT5/47
L8,5	BIKELT485	L8,5	BIKELT485
L10	BIKELT410	L10	BIKELT410
L11,5	BIKELT4115	L11,5	BIKELT4115
L13	BIKELT413	L13	BIKELT413
L15	BIKELT415		

**BIONER DIGITAL**

DIGITAL SOLUTIONS FOR IMPLANTS

exocad®

3shape®

Bioner has digital  
solutions available  
to restore its implants.



B for dentistry.



+34 934 700 360

bioner@bioner.es

+34 669 613 740



BIONER.ES

