



DM PLUS

Indicated for cases of atrophic maxilla

DM PLUS, A SOLUTION FOR EXTREME CASES

DM PLUS allows a less invasive and simpler technique in cases of maxillary atrophy. **DM PLUS** combines an advanced design with the Bioetch® surface, the best grade 5 titanium surface on the market.

The combination of both features provide a great primary stability and a fast osseointegration.

DM PLUS KEYS

- › A new technique to treat the atrophic maxilla
- › Transinusal placement
- › Primary stability due to its conical profile
- › 45° and 60° angled minicone abutment for greater prosthetic versatility
- › Connection 100% compatible with Top DM implant



**DOWNLOAD
THE VIDEO**

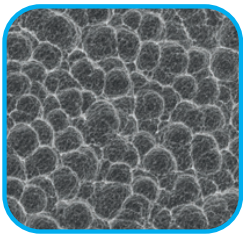
Watch the video



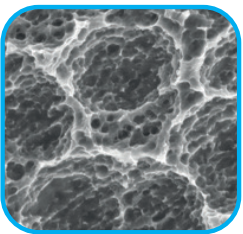
BIOETCH[®], THE BEST SURFACE MADE OF GRADE 5 TITANIUM

The exclusive **Bioetch[®] surface** treatment, developed by **BIONER**, is optimal for the **DM PLUS** implant. It consists of a two-step acid treatment to produce a macro and micro textured surface that stimulates osseointegration and shortens the implant loading time.

Bioner has achieved the best grade 5 titanium surface available in the market.



Surface
macro textured

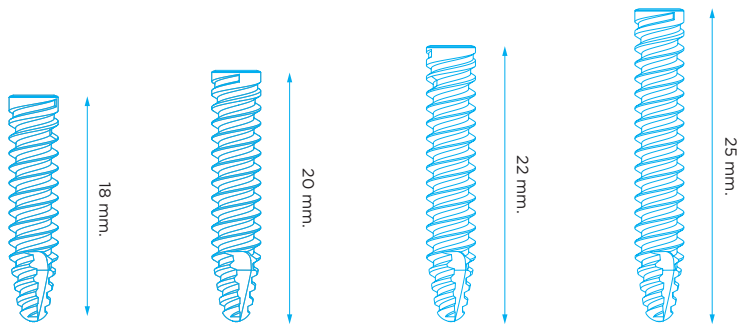


Surface
micro textured

SIZES AVAILABLE

Ø 4mm.

H18	DM-418+
H20	DM-420+
H22	DM-422+
H25	DM-425+





B for dentistry.



+34 934 700 360

bioner@bioner.es

+34 669 613 740



BIONER.ES

