



# **IKELT**

Universal external hexagon connection implant

# IMPLANT GEOMETRY

The **IKELT** is an external hexagon implant **made of grade 4 titanium**. Available in a wide variety of diameters and lengths, it is a versatile implant suitable for all types of bones.



## SURGICAL KIT

The **IKELT** implant has a reduced and easy-to-use surgical kit. It consists only of 6 cylindrical two-diameter drills and two countersink drills that allow its insertion in any type of bone.



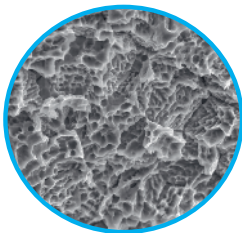
**CLINICAL CASES  
CATALOGUE**

[Download here](#)

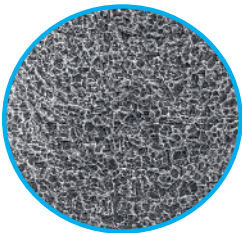


# IMPLANT SURFACE

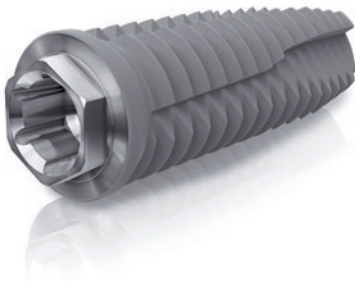
The **IKELT** implant has a moderately rough surface whose structure is optimal to facilitate the osteoconduction process. Such surface is obtained by means of an acid etching process. This process doesn't include sandblasting, thus eliminating the risk of surface contamination.



Suface  
micro textured



Suface  
macro textured



# SIZES AVAILABLE

| Ø 3.3mm. |            | Ø 3.75mm. |             | Ø 4mm. |           | Ø 5mm. |           |
|----------|------------|-----------|-------------|--------|-----------|--------|-----------|
| L7       |            | L7        | IKELT3757   | L7     | IKELT47   | L7     | IKELT57   |
| L8,5     |            | L8,5      | IKELT37585  | L8,5   | IKELT485  | L8,5   | IKELT585  |
| L10      | IKELT3310  | L10       | IKELT37510  | L10    | IKELT410  | L10    | IKELT510  |
| L11,5    | IKELT33115 | L11,5     | IKELT375115 | L11,5  | IKELT4115 | L11,5  | IKELT5115 |
| L13      | IKELT3313  | L13       | IKELT37513  | L13    | IKELT413  | L13    | IKELT513  |
| L15      | IKELT3315  | L15       | IKELT37515  | L15    | IKELT415  | L15    | IKELT515  |



B for dentistry.



+34 934 700 360

bioner@bioner.es

+34 669 613 740



BIONER.ES

